



Compostable and recyclable flexible
packaging solutions custom-designed
with your products in mind

**Earth-Friendly
Packaging
your brand can be
proud of !**

bioTM
pouches
Return To Natural

www.biopouches.com

WHAT IS COMPOSTABLE PACKAGING?

BIPOUCHES.COM

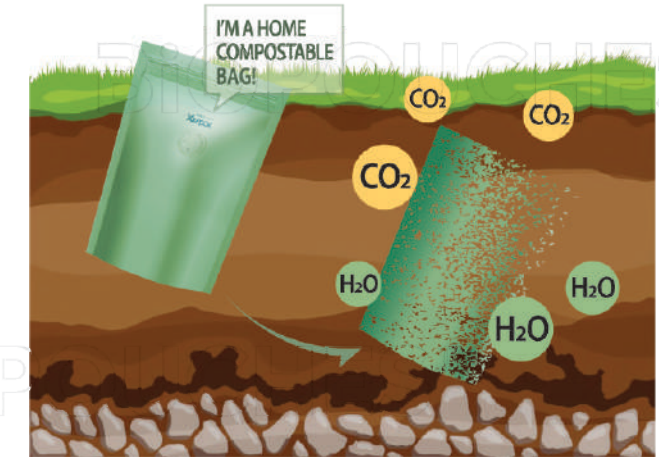
Compostable packaging is made of specific materials that can biologically disintegrate and decompose in home or industrial composting facility. There are multiple types of compostable packaging materials, from traditional paper to bioplastics. The difference between bioplastics and traditional plastics is what they're made of. Traditional plastics are made of petroleum or gas, whereas bioplastics are made from plant extracts like corn starch and sugarcane.

The resulting broken down material from compostable packaging is nutrient-rich and is able to be incorporated into the soil. This compost helps plants grow and thrive, and contributes to a more sustainable, closed-loop consumer system.



HOME COMPOSTABLE

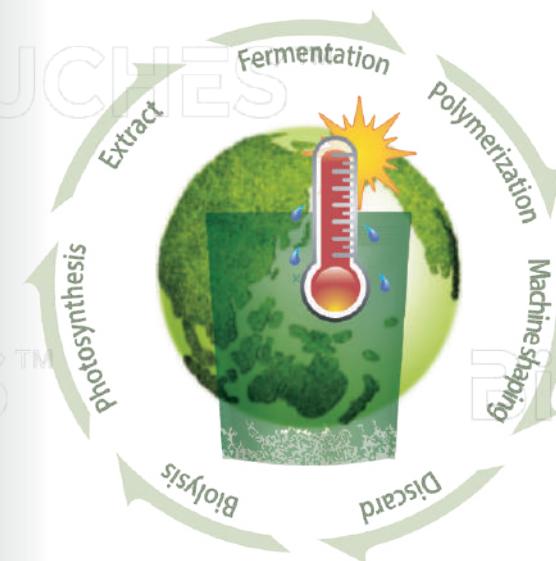
Home composting occurs at a much lower temperature and over a longer time than industrial composting – usually about a year – whereas industrial composting may be complete in a matter of weeks. Everything that goes into making compostable packaging should break down and decompose into organic soil if it is labelled home compostable. This includes the ink, and glue, everything.



INDUSTRIAL COMPOSTABLE

Industrial composting can deal with a broader range of compostable products and operates in a highly controlled setting with specific temperatures and conditions. Industrial composting is able to apply a far higher temperature to the already pre-processed packaging material.

The high heat breaks the packaging down even further, hastening the decomposition.



COMPOSTABLE PACKAGING MATERIALS

BIPOUCHES.COM

Kraft Paper

Made from wood pulp, unbleached kraft paper is 100% natural, biodegradable, and compostable.

Our kraft paper bags for roasted coffee can be made with two or more layers to protect the beans from moisture, direct sunlight, oxygen, and other external factors that affect freshness. Kraft paper is also one of the easiest materials in the world to recycle.



Rice Paper

The appeal of rice paper lies in its texture, unique appearance, and sustainable origin. Our rice paper comes from renewable sources such as Qintan tree bark and bamboo. Like kraft paper packaging, our rice paper coffee packaging can be made with two or more layers to provide additional protection for your beans.

PLA

PLA packaging is made using a resin that comes from renewable sources, such as corn, sugar cane, and sugar beet. PLA is compatible with digital printing. Furthermore, it is both fully recyclable and compostable, breaking down within 90 days in a commercial facility.



Sustainable Ink

Sometimes, what's on the outside does matter! Sustainable inks are made from renewable resources such as vegetable oils, soybeans, and corn. These ingredients are all natural and cause no harm to the environment. In addition, these inks are non-toxic and safe for both humans and animals. Sustainable inks are also biodegradable, meaning that they will break down over time and will not build up in landfills.

Sustainable inks have a number of benefits over traditional petroleum-based inks. They are better for the environment, they are safer for humans and animals, and they are more efficient to produce. In addition, sustainable inks tend to be more cost-effective than traditional inks.

NK

A typical material produced by NaturalFLEX, is widely used in home compostable packaging. Made from plant, high barrier, NK is becoming more and more popular in compostable packaging.



Compostable valve and zipper

When we say 100% compostable we actually mean 100%. All components including zippers and valves are made from plants and are fully biodegradable and compostable too. They break down into healthy compost leaving no micro-plastics and conform to all major compost certifications including OK Compost Home and AS5810.

RECYCLABLE PACKAGING

www.biopouches.com

Overall plastic waste is reduced by removing the conventional Nylon, Foil, Metalized and PET layers. Instead, our Pouches use a revolutionary single-layer so that consumers can simply pop it into their household soft plastic recycling.

By using a single material, the pouch can easily be sorted and then recycled without any pathway contamination.

These bags are made of low density polyethylene (LDPE) coated with a very thin layer of EVOH - an environmentally friendly barrier plastic. This combination of materials means the bags can be 100% recyclable and that the product is kept incredibly fresh.

Recyclable bags are now widely used for petfood, coffee and snacks.

To meet your recycling target, again and again, and again...



CERTIFICATIONS

BioPouches is excited to announce that we have received the BPI Certification mark from the Biodegradable Products Institute (BPI), HOME Compostable certification from DIN CERTCO, and also Australasian Bioplastics Association[ABA] certification. These are three main institutes who carries out the tests to verify the bags complies the highest compostable standards.

These certifications indicate third-party verification of compostability for manufacturers and brand owners to use on products and packaging and for consumers, end-users, and customers to use when determining whether or not a product or package is compostable.

Compostable is in progress. Now you see, now you don't...



Coffee Packaging

In order to maintain the aromatics and rich flavors that are crucially important to your coffee beans, the right packaging can make the difference between a winning SKU and a stale blend. Our sustainable coffee packaging can not only satisfy the needs of sustainability, but the needs to secure your coffee flavor.

Our long list of customers in this area, including PEETS, SaltSpring, Level Ground, Ethical Beans, Stumptown, etc, agrees that our sustainable materials are the perfect solutions for meeting their complex packaging needs. You won't compromise on convenience, barrier, or traditional looking to make sustainable choice. Our materials provide:

An excellent aroma barrier that prevents coffee from airing out .Superior oxygen and moisture protection.

- Anti-static properties
- Opaque packaging options to eliminate UV damage
- Clarity and gloss for product over-wrap



PET-FOOD Packaging

The pet food industry is not immune to the current climate change and sustainable packaging trend.

There are a lot of different ways to package pet food for distribution, but there is one that stands out above the rest in terms of sustainability.

The most popular sustainable packaging choice for PETFOOD is recyclable packaging.



With anti-slip varnish and strong material, they can hold heavy products and deliver well.

Without compromising your packaging needs, our recyclable packaging is affordable and can reduce your carbon footprint.

Not only do we have the sustainable pet-food packaging solutions to choose, we pride ourselves on offering the high quality printing technology and fast turnaround time in the industry.

Snack Bags And Dried Food Packaging

Individually-wrapped snacks and dried foods are perfect for vending machines, individual resale, or grab-and-go treats for your busy customers. Unfortunately, these products are often wrapped in petroleum-based plastic packaging that generates far too much waste for foods that are consumed so quickly. What's preventing many manufacturers from switching to compostable packaging materials for food, however, is the belief that plant-based packaging won't be able to cover all of the specs necessary in prolonging their shelf-life.

At BioPouches, we offer packaging solution that is better for the earth, but can withstand the test of time when it comes to protecting your brand's packaged snacks and dried foods.

Our compostable packaging provides:

- A high oxygen barrier
- Excellent grease resistance
- Protection against mineral oil contamination
- Light and durable materials
- Exceptional seal integrity for heat seal flow-wrap



100% Paper bags more paper more natural



Bio
pouches™

Return To Natural

www.biopouches.com